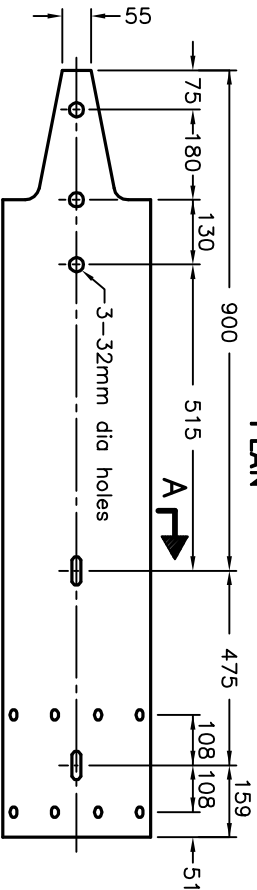




PLAN

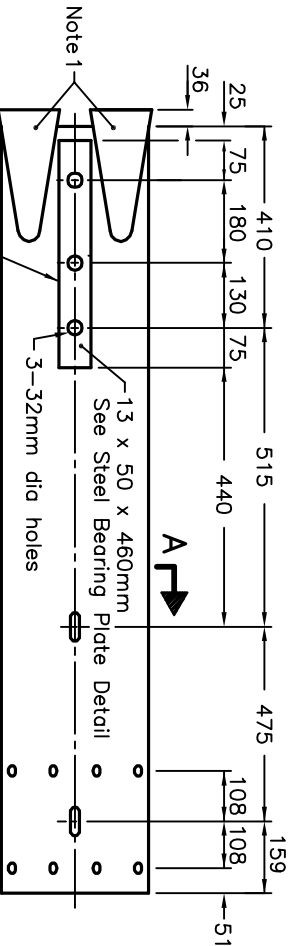


ELEVATION

ANCHORAGE BACKUP RAIL

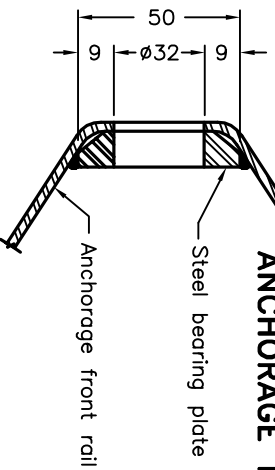


PLAN

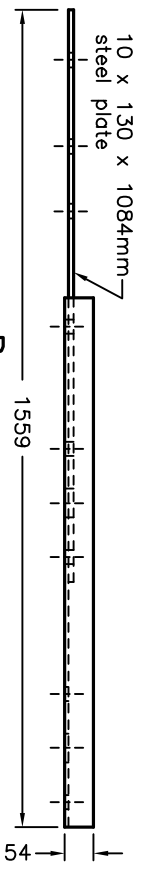


ELEVATION

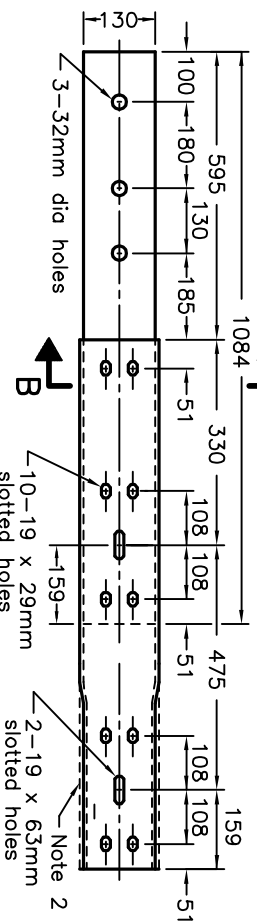
ANCHORAGE FRONT RAIL



STEEL BEARING PLATE DETAIL

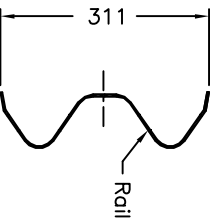


PLAN

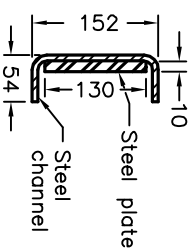


ELEVATION

CHANNEL



SECTION A-A



SECTION B-B

NOTES:

- 1 End sections shall be welded with 2.5mm fillets and standard guide rail element materials shall be used.
- 2 Channel with swaged end shall be used at structure approach and non-swaged end section shall be used at structure exit.
- A All welds shall be according to CSA W59, low hydrogen classification, and ground smooth.
- B This OPSD to be read in conjunction with OPSD 912.101 and 912.102.
- C All dimensions are in millimetres unless otherwise shown.

ONTARIO PROVINCIAL STANDARD DRAWING

Nov 2010 Rev 1

GUIDE RAIL SYSTEM, STEEL BEAM
STRUCTURE CONNECTION

COMPONENT – RAIL AND CHANNEL

OPSD 912.401

