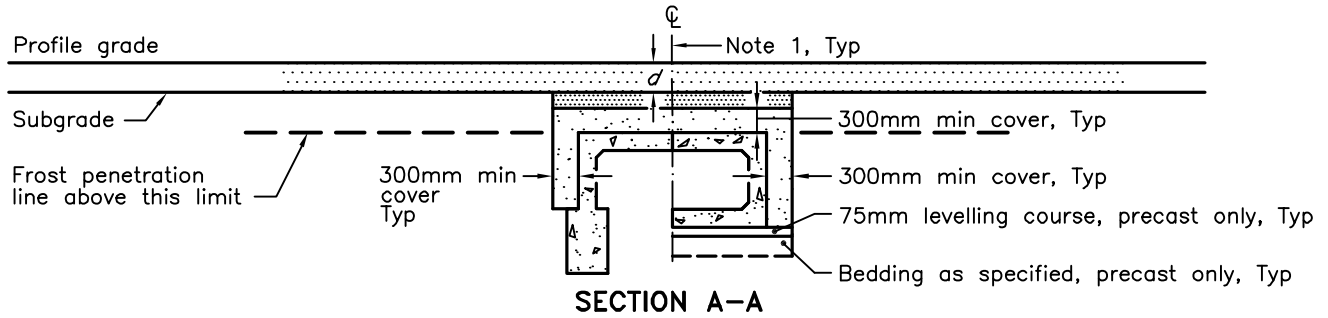
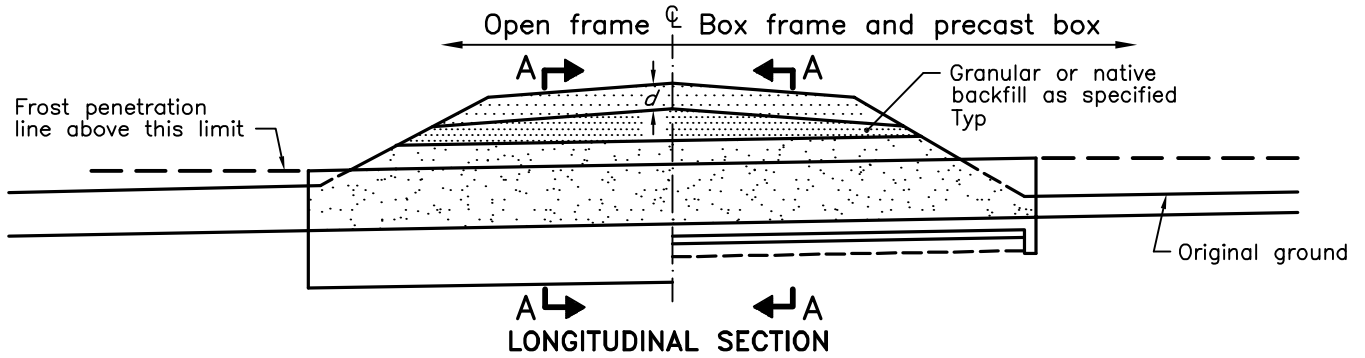
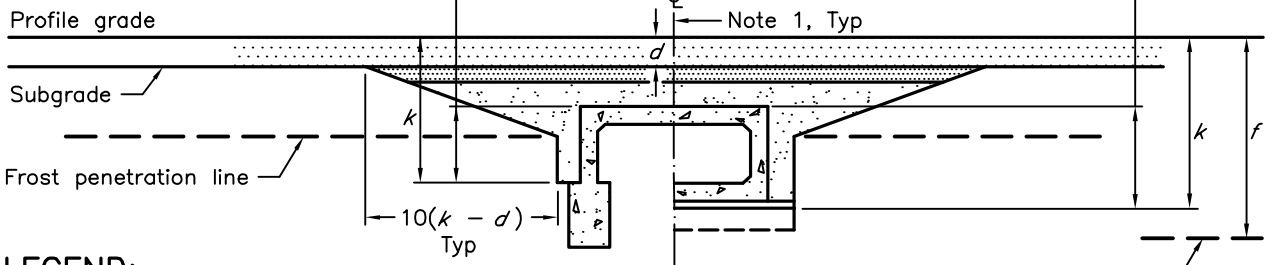
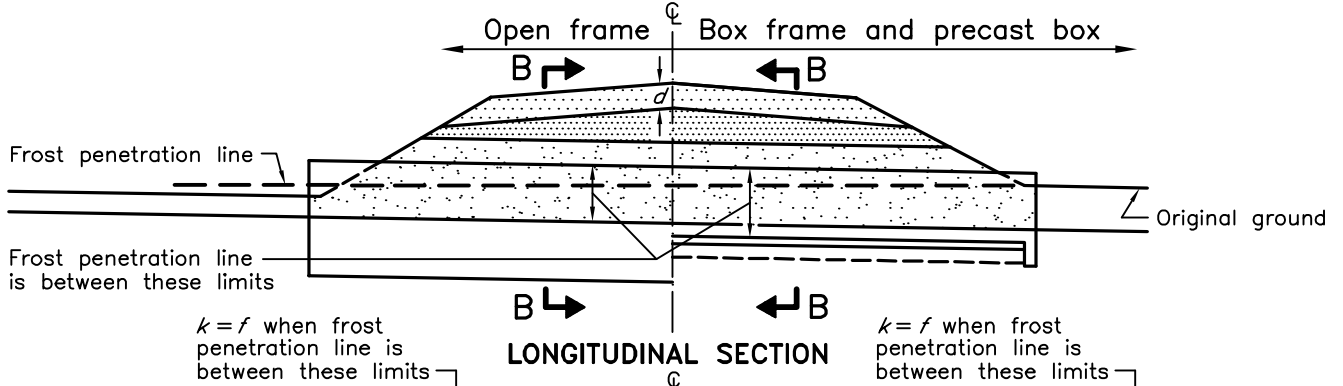


FROST PENETRATION LINE AT OR ABOVE TOP OF CULVERT



FROST PENETRATION LINE BELOW TOP OF CULVERT



LEGEND:

- d = depth of roadbed granular
- k = depth of frost treatment below profile grade
- f = depth of frost penetration below profile grade

NOTES:

- 1 Condition of frost treatment symmetrical about centreline of culvert.
- A Bedding, levelling, and cover material shall be granular as specified.
- B The depth of roadbed granular shall be 600mm minimum.
- C The maximum depth of frost treatment shall be bottom of box frame or top of footing.
- D All dimensions are in millimetres unless otherwise shown.

ONTARIO PROVINCIAL STANDARD DRAWING

Nov 2015

Rev 3

**BACKFILL AND COVER FOR
CONCRETE CULVERTS WITH SPANS
LESS THAN OR EQUAL TO 3.0M**



OPSD 803.010