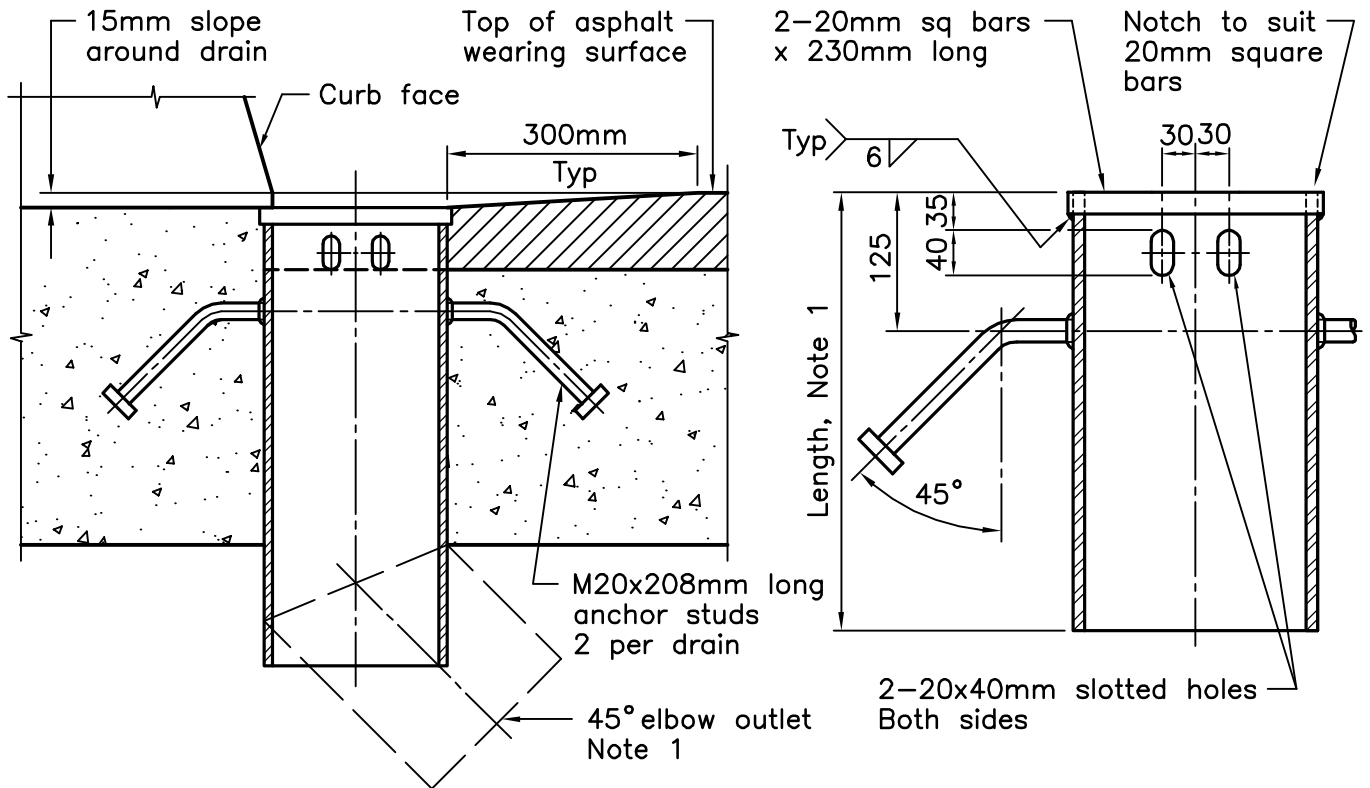


**PLAN**



**SECTION A-A**

**DRAIN**

**NOTES:**

- 1 Length and shape of downspout as specified.
- A Drains shall be hot dip galvanized after fabrication according to ASTM A 123.
- B Anchor studs shall be attached using fusion weld process.
- C Pipe shall be according to ASTM A 53M, Grade B.
- D All welding shall be of a low hydrogen classification and according to CSA W59.
- E All dimensions are in millimetres unless otherwise shown.

ONTARIO PROVINCIAL STANDARD DRAWING

Nov 2014 Rev 2

**DECK  
DRAINS  
WITH DOWNSPOUT**



**OPSD 3340.100**