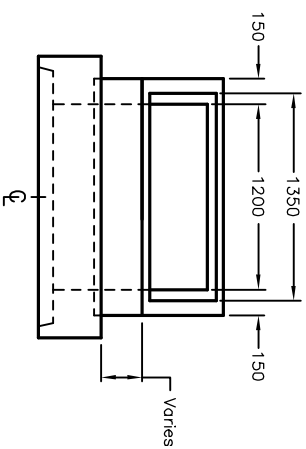
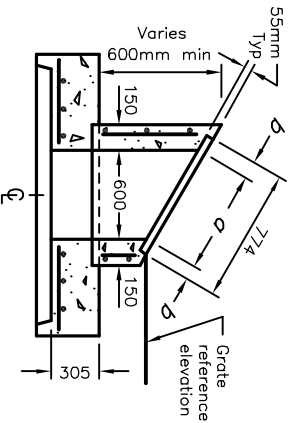


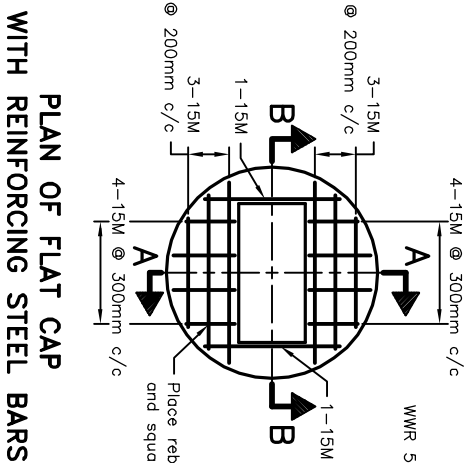
**TYPE A
DITCH INLET**



FRONT VIEW

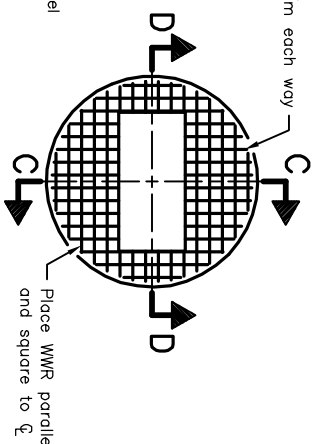


SECTION A-A



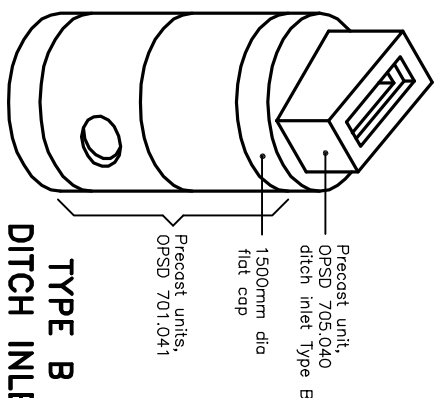
**PLAN OF FLAT CAP
WITH REINFORCING STEEL BARS**

Opening Dimensions		
Grate Type	a	b
2H:1V	670	52
3H:1V	632	71
4H:1V	618	78
Horizontal	600	87

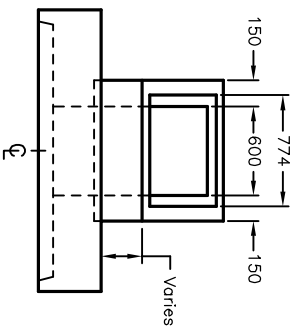


**PLAN OF FLAT CAP
WITH WWR**

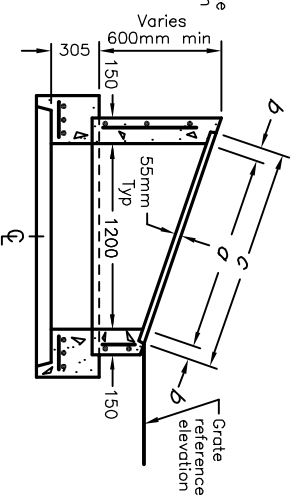
Opening Dimensions			
Grate Type	a	b	c
2H:1V	1341	66	1473
3H:1V	1265	104	1473
4H:1V	1237	118	1473
6H:1V	1216	65	1346
Horizontal	1200	73	1346



**TYPE B
DITCH INLET**



FRONT VIEW



SECTION B-B

ONTARIO PROVINCIAL STANDARD DRAWING

PRECAST CONCRETE DITCH INLETS

WITH 1500mm DIAMETER FLAT CAP

Nov 2014 Rev 3

OPSD 706.010



- NOTES:**
- A Where inlet is placed across ditch and is accessible to vehicular traffic, grating slope shall be 6H:1V or flatter.
 - B All reinforcing steel shall have 25mm minimum cover.
 - C Grating shall be according to OPSD 403.010.
 - D All dimensions are nominal.
 - E All dimensions are in millimetres unless otherwise shown.