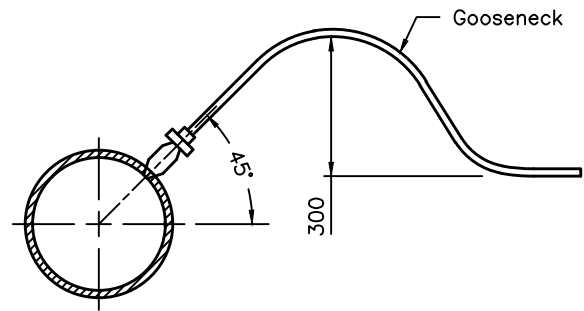
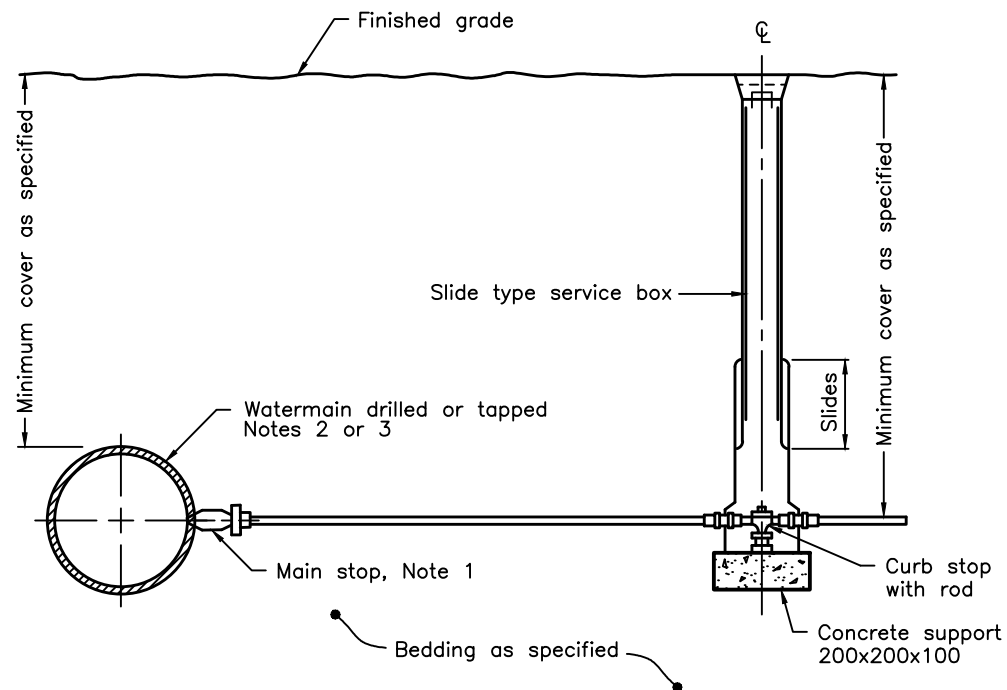


HORIZONTAL GOOSENECK



VERTICAL GOOSENECK OPTION



VERTICAL SECTION

NOTES:

- 1 For plastic service pipes, install main stop at 15° above horizontal with a minimum 1.2m long gooseneck.
- 2 Direct tap ductile iron pipe with approved tool with standard AWWA inlet thread.
- 3 Service connections to plastic watermain shall be made using service saddles or factory made tees.
- A When specified, the vertical gooseneck option shall be used.
- B Couplings shall not be permitted unless the service length exceeds 20m between the main stop and curb stop.
- C All water services shall be installed 90° to the longitudinal axis of the watermain.
- D Backfill material within 500mm of service box shall be native or imported, as specified.
- E All dimensions are in millimetres unless otherwise shown.

ONTARIO PROVINCIAL STANDARD DRAWING

Nov 2018 Rev 4

**WATER SERVICE
CONNECTION**

19 and 25mm DIAMETER SIZES

OPSD 1104.010

