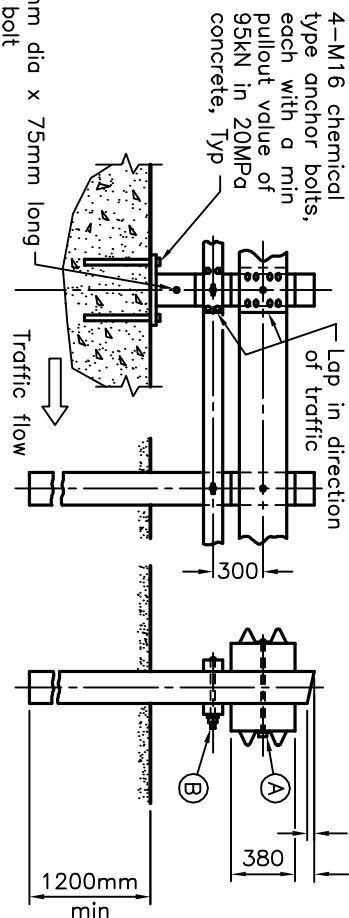
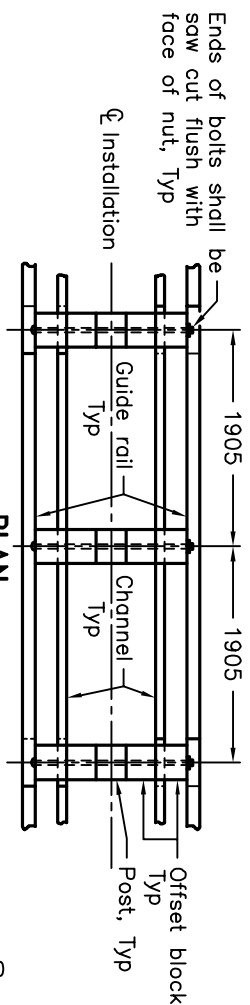


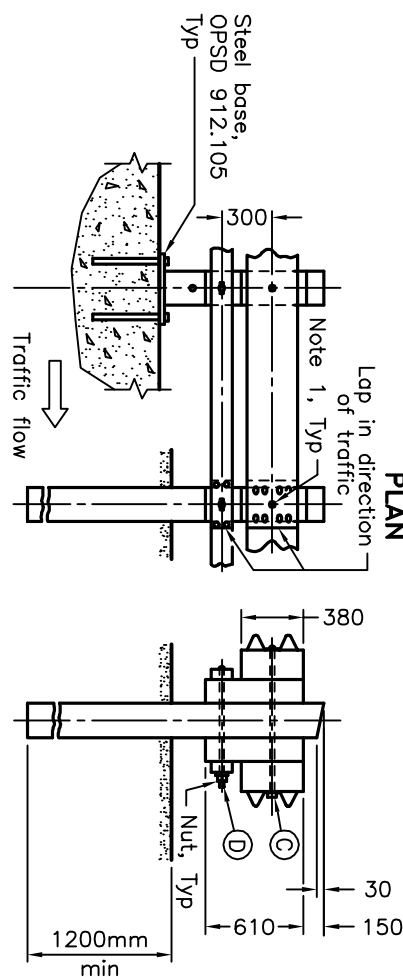
PLAN



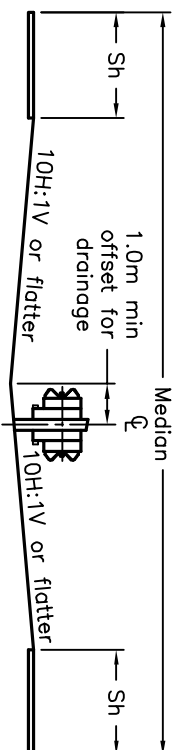
ELEVATION
DOUBLE RAIL WITH CHANNEL



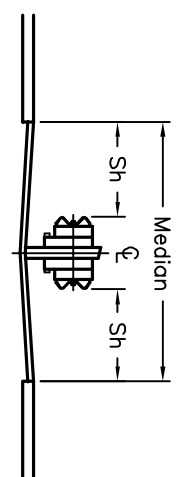
PLAN



ELEVATION
DOUBLE OFFSET RAIL WITH CHANNEL



WIDE MEDIAN



NARROW MEDIAN

POST BOLT AND HOLE	
Hole Dia	Post Bolt Size and Type
(A)	18 16x660 BH
(B)	18 16x355 CAB
(C)	18 16x860 BH
(D)	18 16x660 CAB

NOTES:

- 1 Washer shall not be installed at front face of rail. One bolt located at centre of steel beam guide rail.
- A For double rail with channel, wooden posts and offset blocks shall be 190x190mm. Tops to have 25mm chamfer.
- B For double offset rail with channel, wooden posts shall be 190x190mm and offset blocks shall be 190x140mm. Tops to have 25mm chamfer.
- C Steel beam guide rail mounting heights shall be as specified.

- D This OPSPD to be read in conjunction with OPSPD 912.101 and 912.102.
- E All dimensions are in millimetres unless otherwise shown.

ONTARIO PROVINCIAL STANDARD DRAWING
GUIDE RAIL SYSTEM, STEEL BEAM
WOODEN POST ASSEMBLY
INSTALLATION – DOUBLE RAIL

Nov 2010 Rev 2



OPSPD 912.141