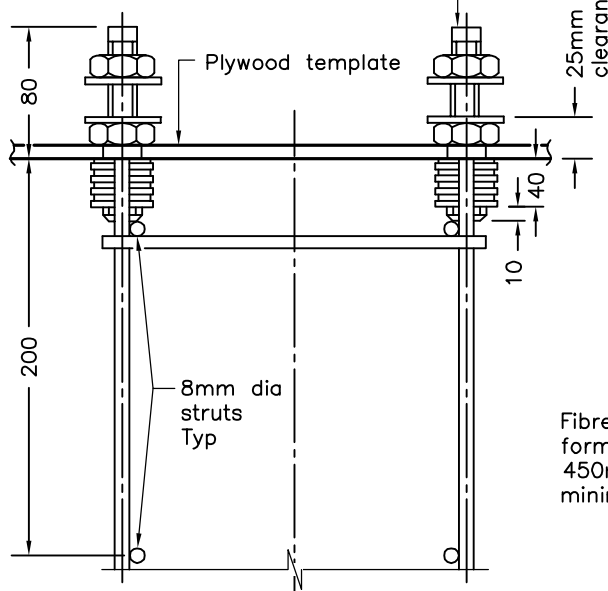
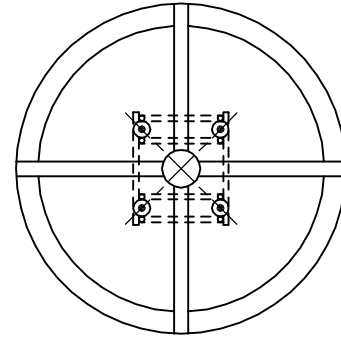


**PLAN**

16mm dia x 130mm long square head stud C/W circular flat washers and hexagon nuts, Typ, Note 2



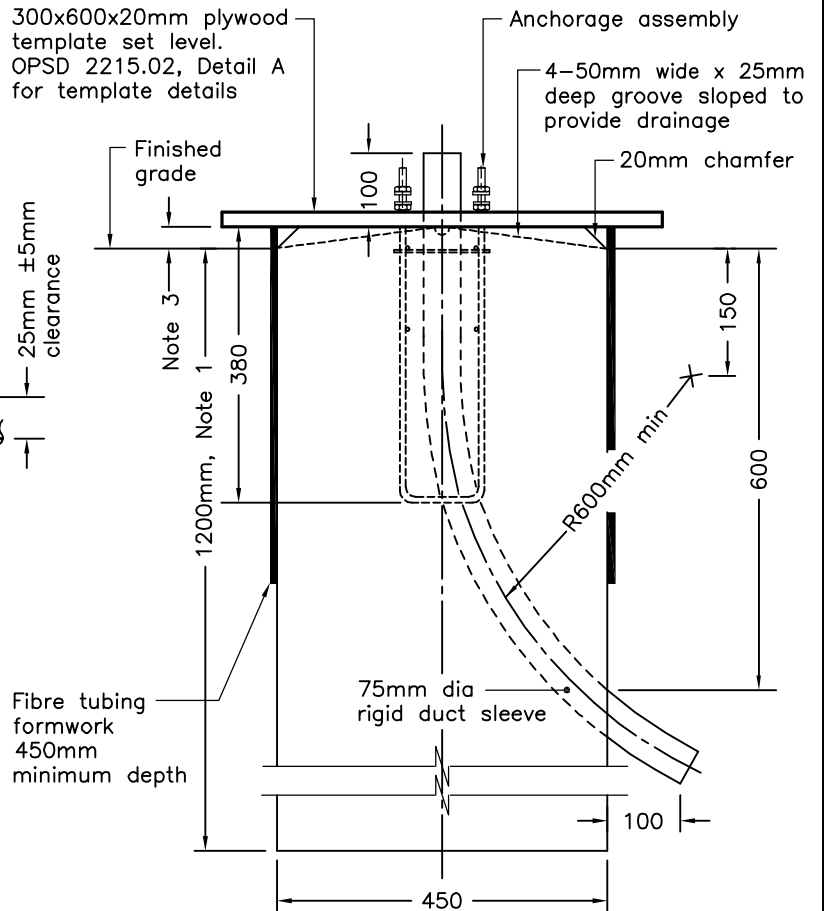
**ELEVATION ANCHORAGE ASSEMBLY**



**PLAN**

Plywood template not shown for clarity


300x600x20mm plywood template set level. OPSD 2215.02, Detail A for template details



**ELEVATION CONCRETE FOOTING**

**NOTES:**

- 1 When rock is encountered at 600mm or less below ground level, the depth of the concrete footing shall be a minimum of 900mm.
  - 2 Studs shall be factory set with preapplied thread locking compound and shall remain in place during footing and pole installation.
  - 3 Top of footing shall be installed at 40mm ±15mm above finished grade in paved or concrete areas and 75mm ±25mm above finished grade in earth or granular areas.
- A All dimensions are in millimetres unless otherwise shown.

ONTARIO PROVINCIAL STANDARD DRAWING	Nov 2014	Rev 2	
<b>CONCRETE FOOTING AND ANCHORAGE ASSEMBLY FOR 3.3m BASE MOUNTED METAL POLE</b>	-----		
<b>OPSD 2200.04</b>			